

Welcome to Indian Country Tech Rider

Updated 10/22/2021

The company carries their own instruments (save for the requested backline) and costumes. The company requires the venue to provide lighting and sound and video equipment, soft goods, crew, adequate stage surface and a full dressing room facility with green room.

Theater

Stage Dimensions: The stage must be at least 30' by 15'. The producer/director is open to the entire performance being staged on the apron or non-traditional spaces if large enough.

Dressing Room

Two dressing rooms that are well-lit dressing room with mirrors, electrical outlets, running water, shower and bathroom facilities. Please ensure that the space is properly heated and lit for the application of makeup.

The green room is requested to have the following items (in quantities great enough for eight people):

- Comfortable seating for eight
- filtered water (bottled is fine if no filtered water is available) with glasses,
- a coffee maker with high quality coffee,
- a hot water kettle with cups, tea bags
- standard tea/coffee condiments including real half and half
- A tray of cut fresh fruit and vegetables, enough for eight
- fresh, hot popcorn would be greatly appreciated as well.
- If the performance is in an area with restaurants that close around or before the show strike, then we request hot meals for seven (eight if traveling with the director/producer) be delivered.

We have the following dietary restrictions:

- Two pescatarians (vegetarians who eat sustainably sourced seafood – if there is a question about what that means treat these as lacto-ovo vegetarian)
- One pineapple allergy
- One gluten free

Sound

The production travels with a full-service sound technician who is also our board operator.

Backline:

Piano – preferably a baby grand tuned on the day we arrive!

Six mics – five on stands and one on the grand piano – for the storyteller, Trumpet, Bass/fiddle, Bass/Guitar, Guitar and Piano - Ribbon Mic preferred for Trumpet

Six Monitors

Two Bass amps w/heads

Acoustic guitar – Gibson or Martin steel string, ideally something older – something with a high tonal quality, ideally with a pickup

DI Box for Acoustic or Acoustic guitar amp

Electric Guitar - fender stratocaster

Electric guitar amp - fender, ampeg, or marshall tube amp would be fine

Violin – anything professional quality is fine, doesn't need to be fancy

Two guitar stands (or a Hercules)

Four music stands – large size if possible

Drums: All drumheads must be coated Remo® coated or Evans® coated heads – Free of Dents and Abuse

- **Drum Sizes**

Bass Drum: 22" x 16" - Rack Tom-Tom(s): 10", 12" - Floor Tom(s): 14" - Snare Drum: 14" x 5" - preferably Brass or equivalent metal shell.

- **Hardware**

Cymbal Stands (2) Boom (1) Straight 1 Hi-Hat Stand 1 Foot Pedal (1) Throne (Roc-N-Soc or Motorcycle Seat style preferred)

Drum Rug with grip bottom

- **Brands & Models**

Preference: 1 - Gretsch™/ USA Custom/Brooklyn Series

2. Yamaha™/ Maple Custom

3. Sonor™/ Designer Series

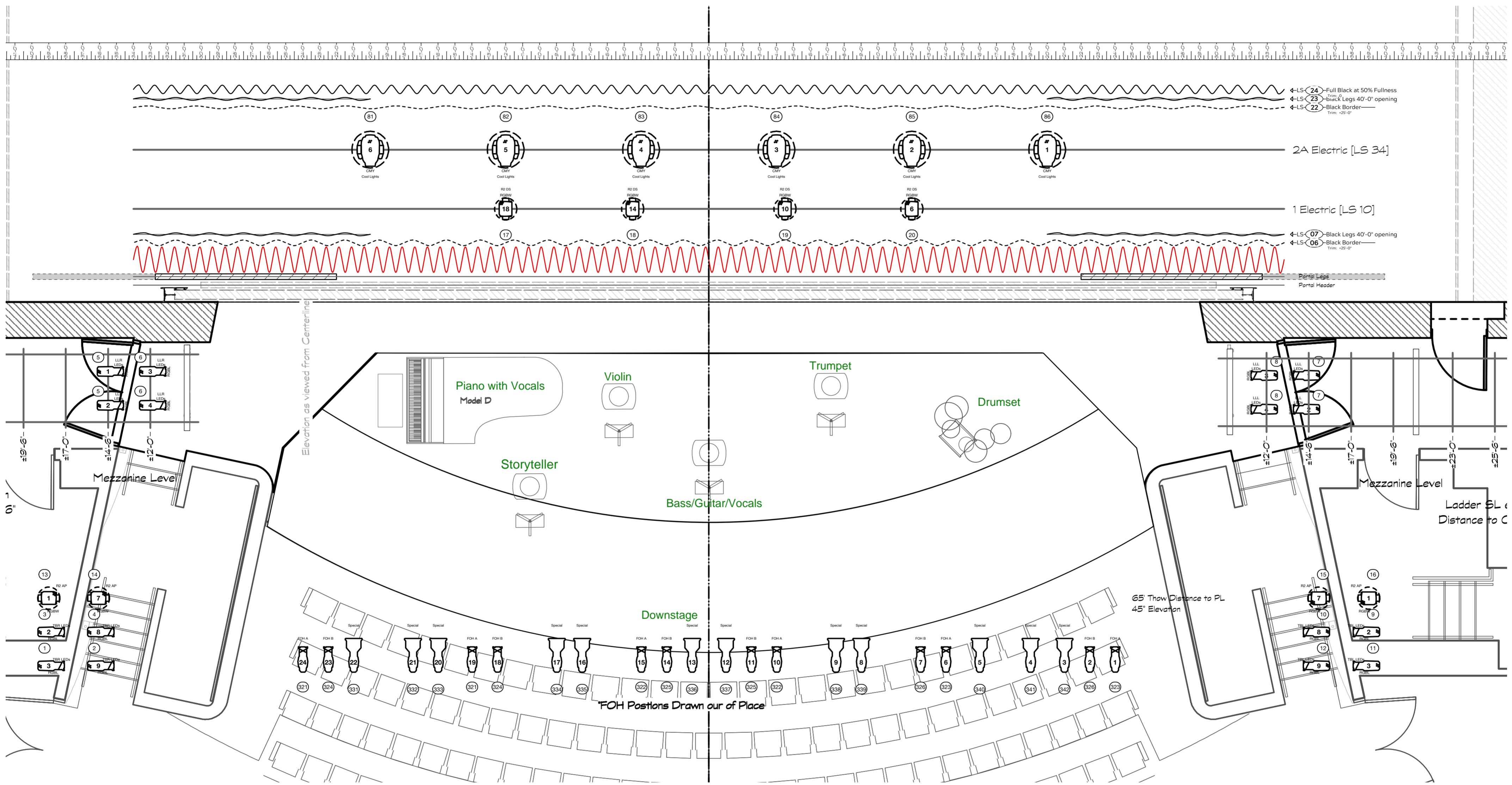
4. DW™/ Classics or Jazz Series

Lighting Equipment/Design

WTIC has an EOS lighting design show file that can serve as a baseline for lighting cues and design. We are reliant on the resident board operator of the venue that we travel to so have a fair bit of flexibility.

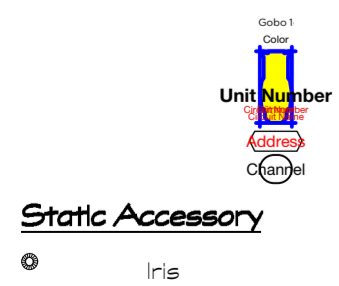
Our lighting design is centered around the idea of drawing focus to and away from performers in individual pieces through the evening. Since there are no entrances or exits during the show this element of revealing and concealing is important to the artist/audience experience.

Stage Plot and Lighting Grid on following page



Symbol Key

TYPICAL



Conventional

- S4-10
18 lbs
- S4-19
17 lbs
- S4 Zoom 15-30
17 lbs

Intelligent

- CHVT
- FREEDOM
- PAR UP
- S4LED-26
14 lbs
- Rogue R2 Wash
20.4 lbs

MOSS ARTS CENTER

Anne and Ellen Fife Theater
Moss Arts Center Production
Welcome to Indian Country

Rep Light Plot

Designer GEA	Director
Drawn By Gustavo Araoz	Scale 1:1/4
Venue Anne & Ellen Fife Theatre	Drawing No. 1 of 1
Revision Date & File Name 10/15/21 Welcome to Indian Country.vwx	

20210922

Welcome to Indian Country

Cue #	Auto	Prompt	Action	Section Name	Cue Notes
1		preshow	fade in preshow look		something nice for walk-in
2		House is ready	Fade house to half		
3		Ruth enters SR	Ruth special		
4		Ruth Exits	transition into show		
100		when the band goes out			
101		band begins playing with audio track		Fiddle Creek	this piece is blue silhouette back light and down light
102			more back light		small build
103		Delbert plays a longers scale	color change		small build and lightinen to animation brighter
105		Rena Speaks after the previous song ends.	xfade to fous on	transition and introductions	s
106			add fiddle light		
107			add light for horn		
108			add light for drum		
109			add light for bass		
110			add light for piano		
111		Rena begins band introductions	add Front specials for the whole band		
112		after she introduces her self .	just Rena		
121		Rena finishes speaking	animation stop	Iron Horse Gallup	
122		musicians begin play	change to warm palette		desert look
122.1	AF				
123		rhythm change change	change to purple and gold palette		SHIFT TO CITY LOOK
124		after drum solo; opening theme returns	change to warm palette		restore desert look
131		Rena Speaks after the previous song ends.	single light at center	transition	the band is shifting and setting up during this section.
132		play begins	lights up on Mali, and to a lesser extent the rest of the ensemble	Lamp Light	gold back light, & special on Mali trying to create an intimate mood.
133		Kick Drum Starts	fill the sage		gold light increases and expands.
140		Rena Talking	Rena Specials up and very dim stage fill	transition and Rena reading	
141		Rena Finishes speaking; Musicians set at center.	intimate purple and amber look	Darn that Dream	Strong deep blue purple light with Julia and Mali featured at center. Song begins with Bass and Vocals. Adds light for Drums and Horn
142		Delbert lifts horn to begin playing; with his first note.	add light for drum and horn		
151		Rena Speaks after the previous song ends.	add Rena special dim band	transition	
151.1	AF		xfade to blue background preparing for "Wichi Tai To"		
152		Rena finishes speaking and Julia at Apron	add broad front fill to the apron for Julia .		Julia will teach the audience some lyrics for the AUDIENCE PARTICIPATION BIT
153		Julia at the Piano; wait for her to begin playing. (1st note).		Wichi Tai To	blue, turquoise and azure fill light with a water effect on the ground and the background.
160		Rena Speaks after the previous song ends.		transition	
161		Song starts	fade in green, and yellow fill.	White People	we going for a an upbeat but slightly weird (read green) mood for the song.
162		Hoot and Holler	greener and meaner		
163		Chatting "Hey, Mali"...	light for Rena and Mali		
164		chatting ends	restore and Build		

171	Rena speaks while Delbert plays horn.	Gold down lights on Rena and delbert	<u>Narbona Pass</u>	<i>delbert is accompanying Rena's speech during this section. The key words were red earth and green mountain.</i>
172	Rena finishes; tempo change and Full Band; with Delbert's downbeat.	fast add whole band and brighten.		<i>the look intensifies and brightens</i>
181	Rena Speaks after the previous song ends.	Rena Specials up and very dim stage fill	<i>transition</i>	<i>She recites a poem "Resonance." She then introduces the next song.</i>
182	Rena finishes speaking (will have spoken about grad school and her mother); start of the song.		<u>Love lifts us Up</u>	<i>sweet blue look, intimate and tight.</i>
183	first "love lifts us up"	adds stars		<i>add some background</i>
184	Julia's solo finishes (solo is after emotional instrumental bridge)	makes the stage brighter		<i>brightens the stage</i>
201	Rena Speaks after the previous song ends. --Song completes with soft vocalization.	focus on speaker & transition	<i>Transtion</i>	
202	music starts	xfade speaker out/ singer in	<i>Pedigwajois</i>	<i>greens and purples starts intimate and gets brighter.</i>
202.1 AF		add the band		
203	with Trumpet joining	builds		
203.1 AF				
204	Trumpet finish	pull down		<i>reminiscent of the top of the number.</i>
205	Rena begins Speaking		<i>transition</i>	
206	Rena finishes speaking. Musicians Play.		<i>Carry it on</i>	<i>purpe and white look, this piece stacks effects as the intensity builds.</i>
207	first refrain	builds		<i>purple and white look</i>
208	start second verse	add background		
209	second refrain	add Kicks FX		
210	3rd refrain	add chase FX		
212	with the open vocals	build to white		
213	with Julias hand Signal	pull down		
214	Drum Crash	black out	<i>BLACKOUT</i>	
215	three count into BOWS		<i>Bows</i>	
217	enter Margret		<i>QnA</i>	
218	band exits		<i>post show look</i>	